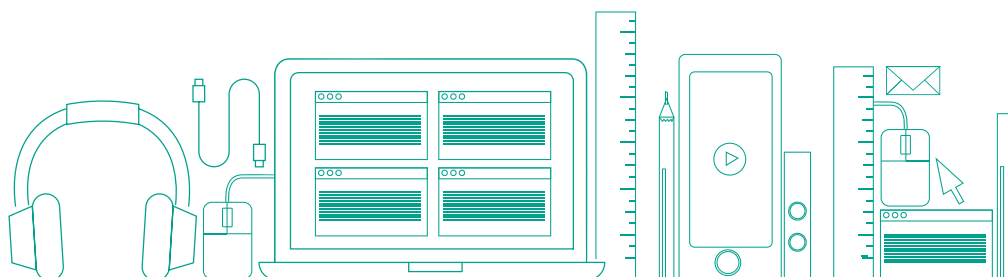


A European Identity, A Global Network

Academic Year 26-27



#StartHere

Our Campuses

BARCELONA, SPAIN



Study in a leading smart city on the Mediterranean coast

- Join a creative community of 2,100+ startups
- Experience world-renowned trade fairs such as the Mobile World Congress
- Home to FC Barcelona, leading worldwide football club

GENEVA, SWITZERLAND



Learn in the international center of diplomacy and finance

- Live in the city of 500+ international organizations and NGOs
- Visit the United Nations and World Trade Organization
- Heighten your international understanding: 41% of residents are international

MUNICH, GERMANY



Live in a business and cultural hub in the heart of Europe

- Visit the headquarters of German giants such as BMW and Siemens
- Immerse yourself in the economic powerhouses of Germany
- Study in a city with innovative vision and sustainable initiatives

DIGITAL CAMPUS



Study EU programs at home and at your own pace

- Learn through progressive teaching methods online
- Attend on-campus weeks to build your international network
- Take part in live masterclasses and webinars delivered by acclaimed lecturers

About Us

EU Business School (EU) has been educating future entrepreneurs and business leaders since 1973.

We are a high-ranking, international business school that offers foundation, bachelor's, master's and MBA programs, taught exclusively in English, in Barcelona, Geneva and Munich, as well as on our Digital Campus.

Headquartered in Switzerland, we believe in Swiss values, an international mindset and a pragmatic approach to learning.

Our small class sizes guarantee personalized learning from a highly qualified faculty of academics and business professionals. Our experiential learning approach, which includes case studies,

business simulations, company visits and conferences with world-renowned leaders, ensures our students excel in the business world.

Our community of 130+ nationalities gives students a multicultural perspective, and our 30,000+ alumni provide networking opportunities around the globe. Inter-campus transfers, exchange programs with our OMNES sister schools in Paris, Bordeaux, Lyon, Monaco and London, together with global study abroad programs, further enhance our students' international experience.

EU Business School is a member of OMNES Education Group, the French leader in private higher education, offering students further academic and international opportunities.

PROFESSIONAL ACCREDITATIONS



VALIDATING & ACCREDITING PARTNERS



RANKINGS

#1



EU's Online MBA ranks #1 worldwide by CEO Magazine

#1



EU's MBA programs rank #1 worldwide for international student and student gender ratio by QS

5*



EU has a 5-Star overall rating from QS Stars

5*



EU has 5 Stars for graduate employability from QS

Top 10



Ranked one of the best business schools in Spain by Forbes, 2025 (#9 Master and MBA)

#16



EU's Online MBA ranked #16 in Europe by QS Top MBA

#37



EU MBA ranked in #34 in Europe by QS

Accommodation

With an accommodation office on every campus, EU provides students with accommodation assistance, ensuring they settle into their new home and life at EU with comfort and ease.

From student residences to apartment rentals, there are a wide range of options.

Depending on your lifestyle and your choice of EU campus, cost of living will vary. Below, we have detailed the approximate monthly costs, so that students can prepare a budget before they begin their studies.

| Barcelona | Monthly rates |
|--------------------|--------------------------------|
| Rent (shared flat) | €650+ |
| Groceries | €380+ |
| Transport | €42,70 (3 month pass for 2025) |
| Insurance | €50+ |
| Miscellaneous | €250+ |

| Munich | Monthly rates |
|--------------------|---------------|
| Rent (shared flat) | €650+ |
| Groceries | €400+ |
| Transport | €29+ |
| Insurance | €120+ |
| Miscellaneous | €400+ |

| Geneva | Monthly rates |
|--------------------|---------------|
| Rent (shared flat) | CHF 1,100+ |
| Groceries | CHF 450+ |
| Transport | CHF 50+ |
| Insurance | CHF 100+ |
| Miscellaneous | CHF 200+ |

Career Services

From career counseling and mentoring to advice on personal branding and networking, EU's Career Services Department (CSD) is on hand to provide advice and assistance to students, giving them a distinct competitive edge.

The CSD team assists students in finding suitable job or internship placements, provides coaching and development workshops, gives one-to-one career advice and provides access to a network of 30,000+ alumni. In addition, global alumni events are held to provide students with a platform on which to build strong business connections.

Some of the companies where our alumni work:



Learning from Leaders

EU Business School regularly invites some of the world's most eminent leaders to share their expertise with students.



Programs & Tuition

Short Summer Programs

| Program | Campus | Start Dates | Duration | Tuition Fees |
|------------------------------------|-----------|----------------|-----------|---------------------|
| International Summer School | Barcelona | July August | Two weeks | €3,550 ⁶ |

Foundation Programs

| Programs | Campuses | Start Dates | Duration | Tuition Fees per Term/Semester ¹ | | | |
|-----------------------------------|--|---------------------------------------|-----------------------------|---|------------|--------|---------|
| | | | | Barcelona | Geneva | Munich | Digital |
| English Foundation Program | Barcelona Geneva Munich Digital | October February | One term (10 weeks) | €5,650 | CHF 8,200 | €5,650 | €5,650 |
| Business Bridging Program | | June August | One semester (13 weeks) | €7,350 | CHF 15,400 | €7,350 | €7,350 |
| Executive Bridging Program | Barcelona Digital | October February June August | One year (two semesters) | €7,350 | N/A | N/A | €7,350 |

Bachelor's Programs

| Programs | Campuses | Start Dates | Duration | Tuition Fees per Semester ¹ | | | |
|--|--|---------------------------------------|---|--|------------|--------|---------|
| | | | | Barcelona | Geneva | Munich | Digital |
| Bachelor's (BBA/BA/BS) programs in one of eight majors Seven semesters with BA (Hons)^{2,3,4} or BSc (Hons)⁵ <ul style="list-style-type: none"> • Business Administration • Digital Communication^{2,4} • Leisure & Tourism Management^{2,3,4} • International Relations • Sports Management • Digital Business, Design & Innovation^{2,3,4} • Artificial Intelligence for Business • Business Finance^{3,4} | Barcelona Geneva Munich Digital | October February June August | Three years (six or seven semesters) | €7,350 | CHF 15,400 | €7,350 | €7,350 |
| Fast track option | | | | | | | |
| Diploma of Advanced Studies (DAS): an additional eighth semester is available for seven-semester programs | Barcelona Geneva Digital | | One extra semester | €7,350 | CHF 15,400 | N/A | €7,350 |
| BA (Hons) in one of four pathways: <ul style="list-style-type: none"> • Business Management (International Business) • Business Management (Marketing) • Business Management (Finance) • Business Management (Enterprise) | Barcelona | October February | Three years (six semesters) | €7,350 | N/A | N/A | N/A |
| BA (Hons) in one of five pathways: <ul style="list-style-type: none"> • Business (Management) • Business (Project Management) • Business (HR Management) • Business (Law) • Business (Information Systems) | Munich | October February | Three years (six semesters) | N/A | N/A | €7,350 | N/A |

Master's & MBA Programs

| Programs | Campuses | Start Dates | Duration | Tuition Fees per Term or Semester ¹ | | | |
|---|--|--|------------------------------------|--|------------------------|------------------------|---------------------|
| | | | | Barcelona | Geneva | Munich | Digital |
| Master in: <ul style="list-style-type: none"> Management^{3,4,5} Marketing^{2,4,5} Finance^{3,4} Tourism & Hospitality Management^{2,4} Innovation & Entrepreneurship Digital Business^{2,3,4} Fashion & Luxury Business Digital Marketing, Transformation & Design Thinking Business Analytics & Data Science Artificial Intelligence for Business Digital International Relations & Diplomacy (with UNITAR)³ | Barcelona Geneva Munich Digital | October January March | One year (three terms) | €5,450 | CHF 10,960 | €5,450 | €5,450 |
| | | | | €3,950 ⁶ | €3,950 ⁶ | CHF 3,950 ⁶ | €3,950 ⁶ |
| Additional qualification: <ul style="list-style-type: none"> MSc International Business Management awarded by London Metropolitan University, U.K. | Barcelona Geneva Munich Digital | | €3,950 ⁶ | €3,950 ⁶ | CHF 3,950 ⁶ | €3,950 ⁶ | €3,950 ⁶ |
| MSc programs <ul style="list-style-type: none"> MSc International Business Management MSc Economics & Data Analytics MSc International Banking & Finance | Barcelona | October January March ⁷ | One year (three terms) | €5,800 | N/A | N/A | N/A |
| MBA | Geneva Munich Digital | October January March | One year (three terms) | N/A | CHF 13,250 | €7,600 | €6,350 |
| | | | or Two years (six terms) | N/A | CHF 3,950 ⁶ | €3,950 ⁶ | €3,950 ⁶ |
| MBA | Barcelona | October January March | One year (three terms) | €7,600 | N/A | N/A | N/A |

DBA Program

| Program | Campus | Start Dates | Duration | Tuition Fees |
|------------------|--------|----------------|------------------|--------------|
| DBA ⁸ | Geneva | Rolling intake | Two to six years | CHF 42,00 |

¹ Additional costs such as a €200 application fee will apply

² Available at EU Barcelona

³ Available at EU Geneva

⁴ Available at EU Munich

⁵ Available at EU's Digital Campus

⁶ Single payment

⁷ March intake not applicable for the MSc Economics & Data Analytics

⁸ Paid in nine installments, including the advance tuition payment

Admissions Requirements

International Summer School

- High school transcripts
- Proof of English level: TOEFL score 80 (internet-based); 211 (computer-based); IELTS score 6.0; CAE B2 with a minimum score of 169; minimum PTE Academic score of 51; native English speaker or equivalent
- For students from 16 to 19 years old (minors: guardianship mandatory)

English Foundation Program

- Proof of English level: TOEFL score 59 (internet-based), 169 (computer-based); IELTS 5.0; CAE B1 with a minimum score of 154; minimum PTE Academic score of 40

Business Bridging Program

- 1 certified copy of high school diploma or equivalent and transcripts
- Proof of English level: TOEFL score 79 (internet-based), 211 (computer-based); IELTS 5.0; CAE B2 with a minimum score of 169; minimum PTE Academic score of 51; native English speaker or equivalent
- 1 letter of recommendation and 1 motivation letter

Executive Bridging Program

- 1 certified copy of high school diploma or equivalent and transcripts.
- Proof of English level: TOEFL score 79 (internet-based), 211 (computer-based); IELTS 6.0; CAE B2 with a minimum score of 169; minimum PTE Academic score of 51; native English speaker or equivalent
- 1 copy of CV/résumé
- Minimum of 5 years' managerial experience
- 2 letters of recommendation
- 1 written or video essay

Bachelor's Programs

- 1 certified copy of high school diploma or equivalent and transcripts
- Proof of English level: TOEFL score 79 (internet-based), 211 (computer-based); IELTS 6.0; CAE B2 with a minimum score of 169; minimum PTE Academic score of 51; native English speaker or equivalent
- 2 letters of recommendation
- 1 written or video essay

Master's & MBA Programs

- 1 certified copy of bachelor's degree and transcripts
- Proof of English level: TOEFL score 93 (internet-based), 238 (computer-based); IELTS 6.5; CAE C1 with a minimum score of 176; minimum PTE Academic score of 58; native English speaker or equivalent
- 1 copy of CV/résumé
- 2 letters of recommendation
- 1 written or video essay

Applicants must also meet one of the following:

- A GPA of 3.0 on a 4.0 scale
- A satisfactory score on the GMAT or GRE
- An interview with the academic dean

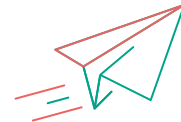
Admissions Process



Fill in the application form



Write or film your essay



Send the documentation required for the program



Application reviewed by the admissions committee



Resolution

EU's English Language exam is available for those with no official English qualification.

Candidates who wish to apply for the additional qualification, an MBA from London Metropolitan University, U.K., must have more than two years of professional work experience in addition to the requirements.

For details of the required additional documentation and instructions on our admissions process, visit our website at www.euruni.edu or contact your recruitment representative by email.

Barcelona

Diagonal Campus
Diagonal 648 bis
08017 Barcelona
Spain

Upper Sarrià Campus

Osi 7
08034 Barcelona
Spain

Ganduxer Campus:

Ganduxer 70
08021 Barcelona
Spain

T +34 93 201 81 71
info.bcn@euruni.edu

Geneva

Main Reception
Esplanade de Pont-Rouge 2
1212 Lancy, Geneva
Switzerland

Route des Acacias 43
Bâtiment 43L
1227 Geneva
Switzerland

T +41 22 779 26 71
info.gva@euruni.edu

Munich

Theresienhöhe 28
80339 Munich
Germany

T +49 89 5502 9595
info.muc@eumunich.com








Digital

T +34 93 201 81 24
info.dgctl@euruni.edu

SCAN FOR INFORMATION



FIND US ON

-  @EU_Business_School
-  EUBusinessSchool
-  @EU_group
-  EU Business School
-  euruni.edu/blog
-  euruni.edu/youtube
-  eu_business_school

VALIDATING & ACCREDITING PARTNERS



MEMBER OF

